

Power ON with no MD loaded. *1

*1 : Refer to Measurements and Adjustments

Does player enter adjustment mode? *1

Set to read power adjustment mode. *1

Is read power output?

Can read power be set to 600µW or lower using VR1?

Set to write power adjustment mode. *1

Is write power output?

Adjust write power and check ROM data laser power and RAM data laser power.

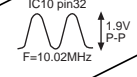
To "ROM/RAM Operation"

15	5V	19	5V	20	3.3V
21	5V	27	3.5V		

Is CN4 power supply line OK?

Check power supply circuit on main unit.

Is oscillation signal input for IC10 pin 32?



Is IC10 pin 21 "H"?

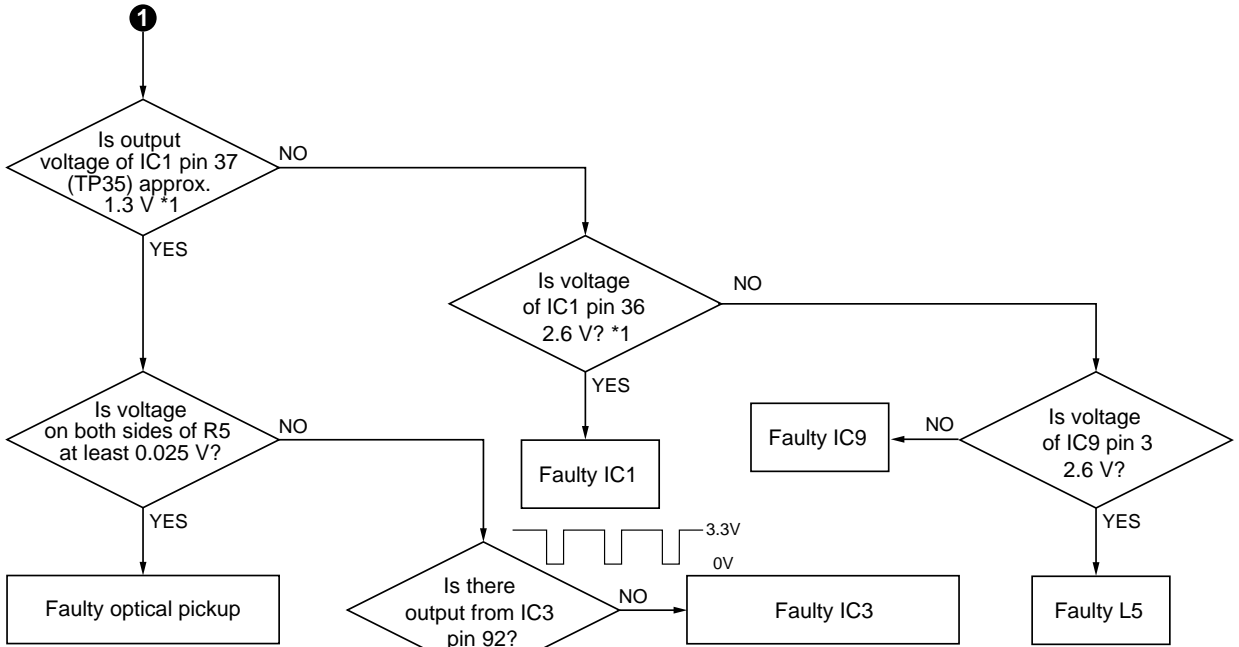
(Continued on next page.)

Faulty optical pickup

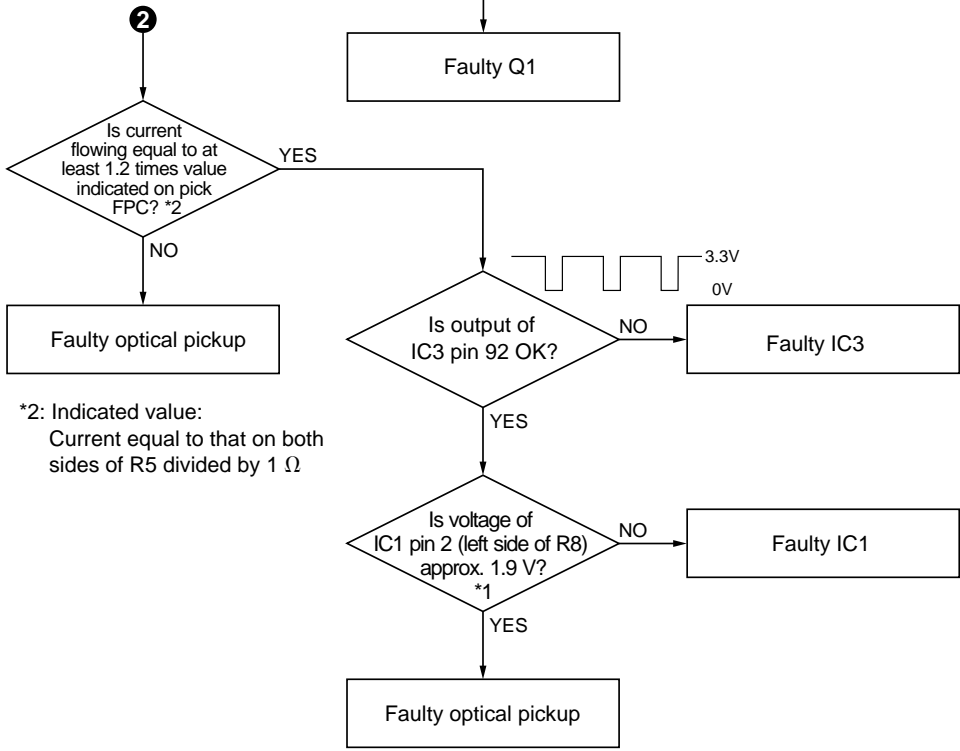
Faulty IC10

Check reset circuit on main unit.

(Continued on next page.)

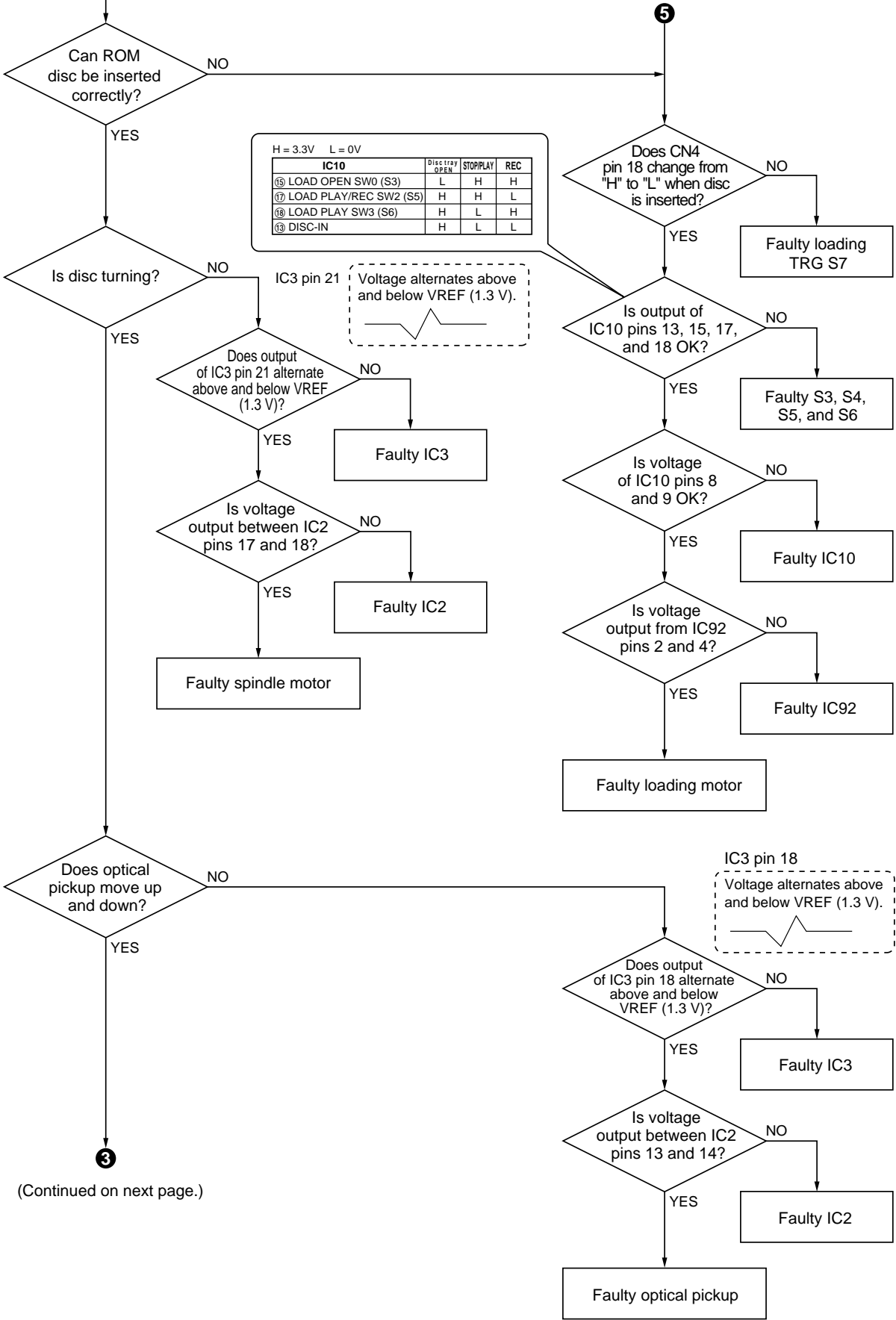


*1: For measurements of IC1, refer to the item 7.2.2. of "Operation Checks and Component Replacement Procedures".



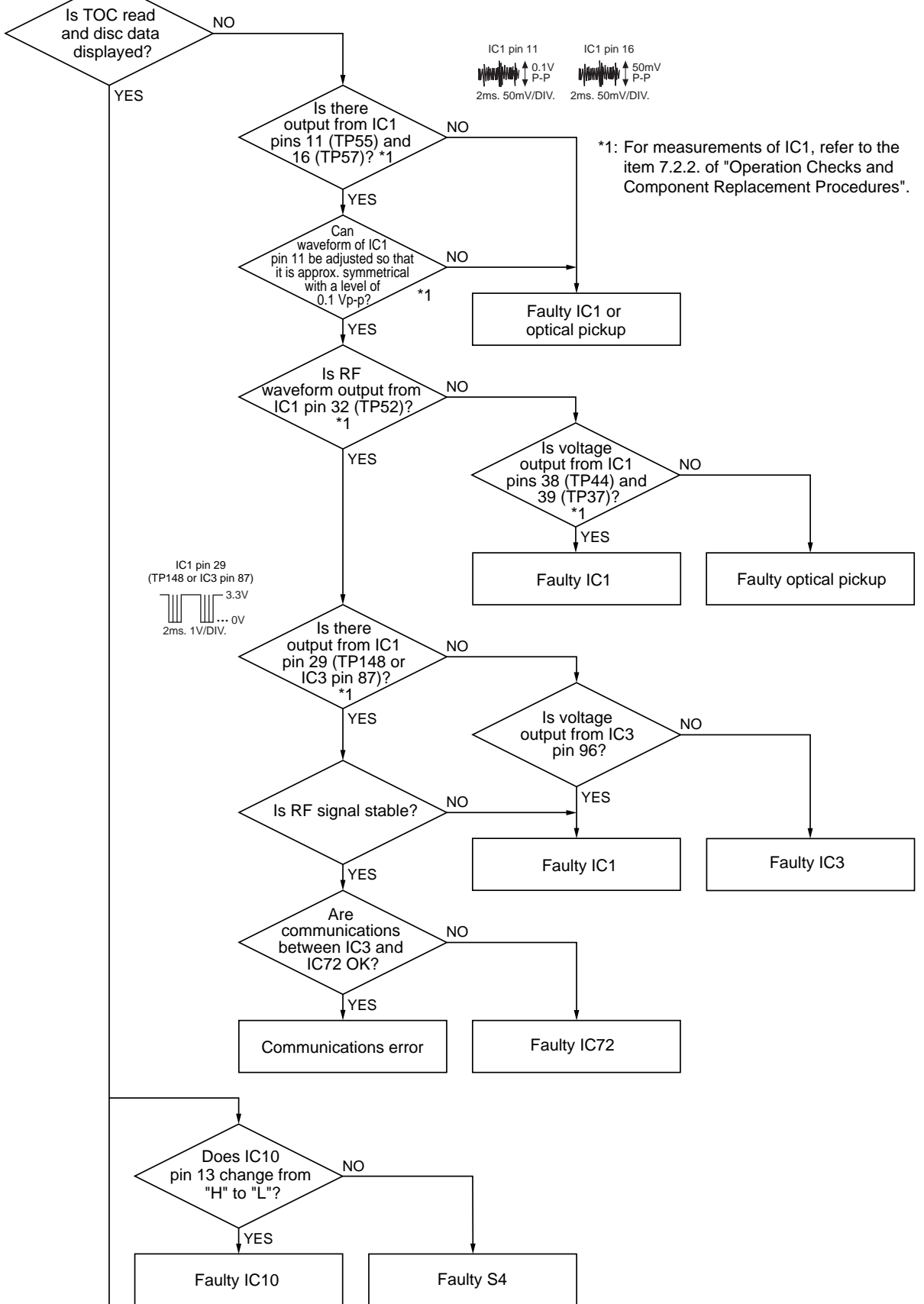
*2: Indicated value:
Current equal to that on both sides of R5 divided by 1 Ω

ROM/RAM Operation



(Continued on next page.)

3



4

(Continued on next page.)

