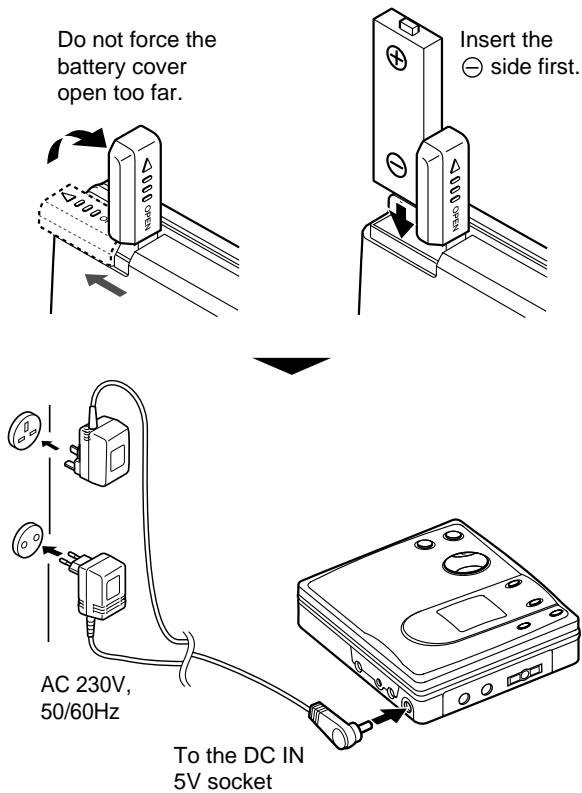


OPERATION MANUAL

Using with the Rechargeable Battery



■ Charging the rechargeable battery

When the rechargeable battery is used for the first time or when you want to use it after a long period of disuse, be sure to charge it fully.

1 Insert the rechargeable battery.

A rechargeable battery other than the AD-N55BT cannot be charged.

2 Plug the AC adaptor into the wall socket, and then insert the plug on the other end into the DC IN 5V socket.

3 Press the MENU/CHRG button.

The battery indicator will scroll, and battery will begin charging.



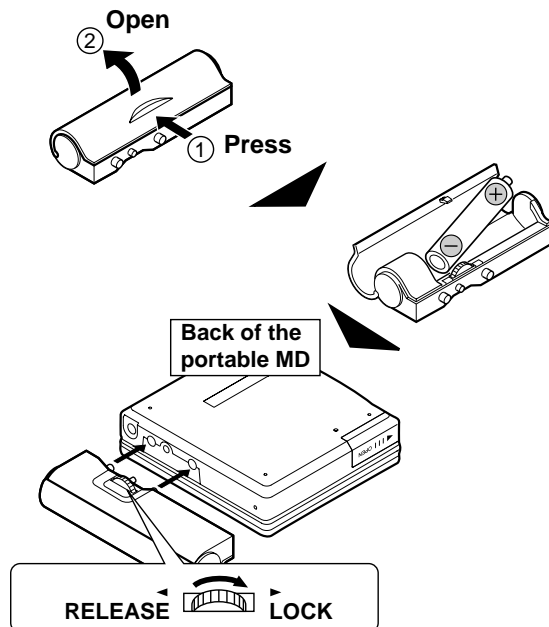
Scrolling

- After the rechargeable battery is charged or used, it will get slightly warm. This is normal.
- When the portable MD is turned on or operating, the battery will not be charged.

Using with the Alkaline Battery

Use one commercially available alkaline battery (LR6, "AA" size).

When using the alkaline battery, be sure to insert the rechargeable battery also.



1 Open the case cover.

2 Insert an alkaline battery into the battery case.

3 Attach the battery case to the portable MD.

Caution:

- Whilst you are using the rechargeable battery and the alkaline battery at the same time, do not remove either of them. If you do, when the unit is in the play mode, playback will stop. When in the recording mode, the recorded contents will be erased, and the power may be disconnected.
- Do not replace the battery or the rechargeable battery during operation.
- **Do not use a rechargeable battery (nickel-cadmium battery etc.) in the battery case.**
- If the unit is not used for a long period of time, remove the battery. (Even if the power is turned off, the battery will be drained slowly but continuously.)

Error Messages

ERROR MESSAGES	MEANING
BATT EMPTY	<ul style="list-style-type: none"> The battery has run down.
BLANK MD	<ul style="list-style-type: none"> Nothing is recorded. (Replace the disc with a recorded disc.)
Can't COPY	<ul style="list-style-type: none"> You tried to record from a copy prohibited MiniDisc. (Record using the analogue cable.) <ul style="list-style-type: none"> You tried to record signals other than music (such as data).
Can't EDIT	<ul style="list-style-type: none"> A track cannot be edited. (Change the stop position of the track and then edit it.)
Can't PLAY	<ul style="list-style-type: none"> You tried to play back a track that cannot be played with this equipment.
Can't READ (*)	<ul style="list-style-type: none"> The disc data cannot be read because the disc is damaged. (Reload the Minidisc or replace it with another one.)
Can't REC	<ul style="list-style-type: none"> Recording cannot be performed correctly due to vibration or shock.

ERROR MESSAGES	MEANING
Can'tSTAMP	<ul style="list-style-type: none"> Stamp function does not work. (Check the number of tracks.)
Can'tWRITE	<ul style="list-style-type: none"> Cannot save the TOC information correctly to a MiniDisc.
DEFECT!	<ul style="list-style-type: none"> The disc is scratched. (If the recorded sound is not right, retry recording or replace the disc with a recordable one.)
DISC FULL	<ul style="list-style-type: none"> The disc is out of recording space.
Er-MD (**)	<ul style="list-style-type: none"> The microprocessor has reported a system fault and the unit is out of order. (To have it repaired, go to the distributor where you purchased the unit.)
HOLD	<ul style="list-style-type: none"> The unit is in the hold mode.
LOCKED	<ul style="list-style-type: none"> You removed a MiniDisc whilst recording or editing. (Turn off the power before removing the MiniDisc.)
NO DISC	<ul style="list-style-type: none"> A disc has not been loaded.

Number or symbol appears in (*) position.

ERROR MESSAGES	MEANING
NO SIGNAL	<ul style="list-style-type: none"> Poor connection of the digital cable. No output signal comes out from the connected unit to playback. (Use the AC power for the connected unit.) <ul style="list-style-type: none"> The input signal has improper sampling frequency.
PLAY MD	<ul style="list-style-type: none"> You tried to record on a playback-only disc.
PROTECTED	<ul style="list-style-type: none"> The write protection tab of a MiniDisc is set to the protected position. You tried to record on a playback-only disc.
SORRY	<ul style="list-style-type: none"> Since a track number is currently being located or updated, the unit cannot accept your command. (Wait for a while and try the operation again.)

ERROR MESSAGES	MEANING
TEMP OVER	<ul style="list-style-type: none"> The temperature is too high. (Turn off the power, and wait for a while.)
TOC FORM (**)	<ul style="list-style-type: none"> There is an error in the recording signal. (Erase all of the tracks, and then record again.)
TOC FULL	<ul style="list-style-type: none"> There is no space left for recording character information (track names, disc names, etc.).
Tr. Protect	<ul style="list-style-type: none"> The track has been protected from being erased. (Edit the track with the device on which it was recorded.)
? DISC	<ul style="list-style-type: none"> A disc which contains data other than music was played. (A disc which contains nonmusic data cannot be played.) <ul style="list-style-type: none"> There is an error in the signal recorded on the disc.

Number or symbol appears in (*) position.

MiniDisc System Limitations

The unit may have the following symptoms whilst recording or editing. The unit is not out of order.

SYMPTOM	LIMITATIONS
"DISC FULL" or "TOC FULL" appears even though the MiniDisc still has recording time left.	More than 255 tracks (maximum) cannot be recorded regardless of the recording time. If the MiniDisc is recorded or edited repeatedly or if it has scratches (recording skips scratched parts), you may not be able to record the maximum tracks above.
The remaining recording time does not increase even though you erased tracks.	The unit does not count non-recorded portions that last 12 or fewer seconds to display the remaining recording time. The time may not increase even if you erase short tracks.
The total of the recorded time and the remaining time does not match the maximum recordable time.	One cluster (approximately 2 seconds) is the minimum unit for recording. For example, a 3-second track uses 2 clusters (approximately 4 seconds). Therefore, the actual recordable time may be shorter than the displayed time. (The number of seconds indicates that in the stereo recording mode (SP). It varies depending on the recording mode.)
Combine function does not work.	A MiniDisc on which recording and editing are repeated may not allow the combine function.
Sound skips in fast reverse/forward.	If one track is divided and recorded in separate places on a repeatedly recorded or edited MiniDisc, sound may skip.
A track number is created in the middle of a track.	A track number may be created if there are scratches or dust on the MiniDisc.

Troubleshooting

Many potential "problems" can be resolved by the owner without calling a service technician. If something seems to be wrong with this product, check the following before calling your authorised SHARP dealer or service centre.

The unit does not turn on.

- Is the AC adaptor disconnected?
- Is the battery exhausted?
- Is the unit in the hold mode?
- Has condensation formed inside the unit?
- Is the unit being influenced by mechanical shock or by static electricity?

No sound is heard from the earphones.

- Is the volume set too low?
- Are the earphones plugged in?
- Are you trying to play a MiniDisc with data on it instead of a MiniDisc containing music?

When the operation buttons are pressed, the unit does not respond.

- Is the unit in the hold mode?
- Is the battery exhausted?
- Is the earphones plug inserted firmly?

Some sounds are skipped.

- Is the battery exhausted?
- Is the unit being subjected to excessive vibration?

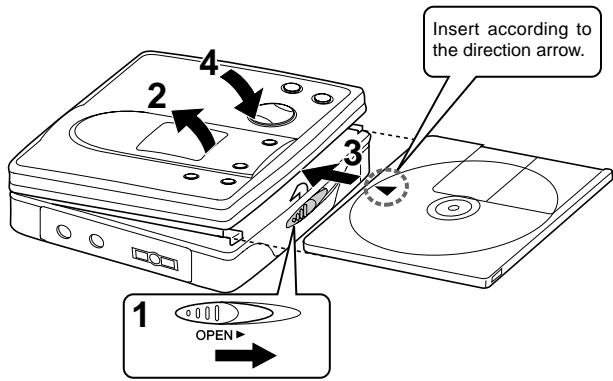
The MiniDisc cannot be ejected.

- Has the track number or character information been written on the disc yet?
- Is the unit in the recording or editing mode?

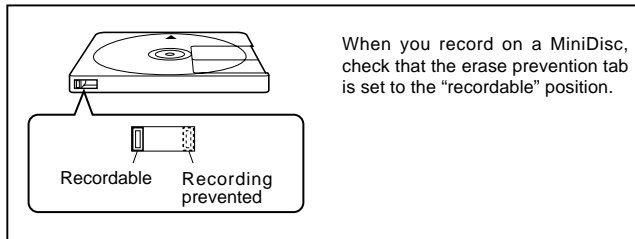
Recording and editing are impossible.

- Is the MiniDisc protected against accidental erasure?
- Is the unit connected properly to the other equipment?
- Is the AC adaptor unplugged or did a power failure occur whilst recording or editing?
- Is the unit in the hold mode?
- Is an optical signal being output from the stereo system? Read the operation manual for the stereo system.

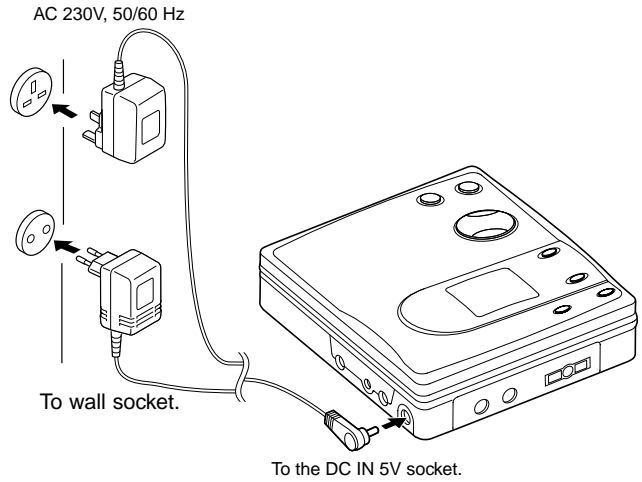
1 Insert a MiniDisc



- 1 Slide the OPEN lever to release the compartment door.
- 2 Lift it up.
- 3 Insert a MiniDisc as shown.
- 4 Close the compartment door.



2 Connect the AC adaptor



- 1 Plug the AC adaptor into the wall socket.
- 2 Insert the plug on the other end into the DC IN 5V socket.

Before using the unit with a rechargeable battery, the battery has to be charged.

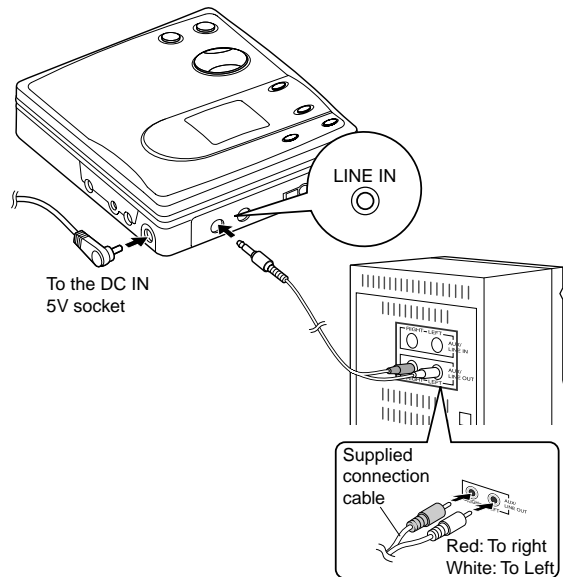
Caution:

- Insert the plugs firmly.
- When the unit is not in use for extended periods, remove the AC adaptor from the wall socket.

3 Connections

■ To connect to a stereo system with "LINE OUT" or "AUDIO OUT" sockets (Analogue connection)

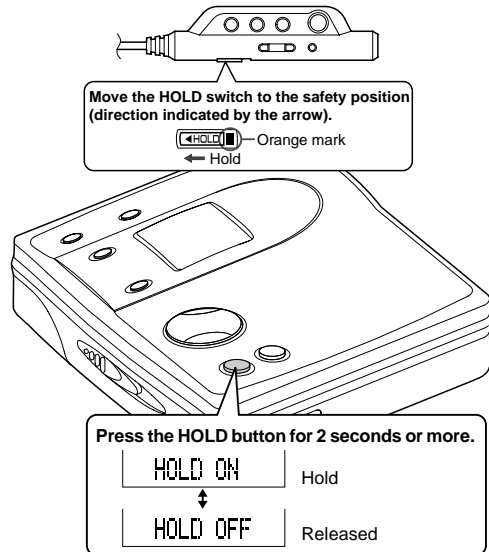
If the audio system has only one pair of sockets, they are usually for input only and recording via this connection is not possible.



Preparation for use

The unit does not work if the HOLD button is set to HOLD.

Remote control unit



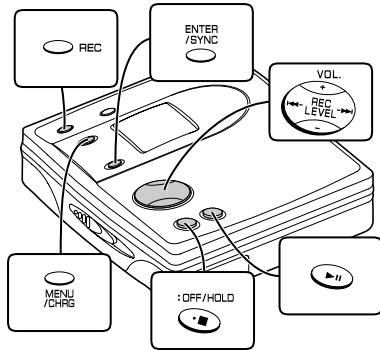
CAUTION:

It is not recommendable to put the MiniDisc into a rear pocket, as this may damage the product when sitting.

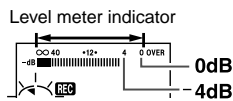


Recording

Check that the unit is connected to the stereo system.



- 1 Press the REC button.**
Record pause mode is entered.
- 2 Begin playback on the stereo system connected to this portable MD.**
To enable the record level to be set.
- 3 Press the REC LEVEL ◀◀ or ▶▶ button to adjust the recording level.**
Adjust the recording level so that the maximum sound volume from the source makes the reading swing somewhere between -4 dB and 0 dB.



This unit can adjust the digital recording level just the same as the analogue recording.

- 4 Press the PAUSE button on the stereo system to enter the playback pause mode.**
Here you can select the track to be recorded.
- 5 Press the MENU/CHRG button repeatedly to select "REC MODE".**
- 6 Press the ENTER/SYNC button.**
- 7 Press the MENU/CHRG button repeatedly to select recording mode.**
- 8 Press the ENTER/SYNC button.**
The mode will be set automatically after 7 seconds even if the ENTER/SYNC button is not pressed.
- 9 Press the ▶|| button to start the MiniDisc unit recording.**
- 10 Begin playback on the stereo system, the output will be recorded.**

To stop recording

Press the ■:OFF/HOLD button.

- When recording stops, "TOC" (Table Of Contents) appears. Whilst "TOC" appears, the MiniDisc recorded contents have not yet been updated.
- To prevent the new recording from being lost, it is not possible to remove the MiniDisc whilst "TOC" is displayed.

To update the recorded contents of the MiniDisc

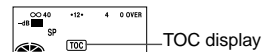
Press the ■:OFF/HOLD button whilst in the stop mode.

- The power turns off after recorded contents have been updated on the MiniDisc.

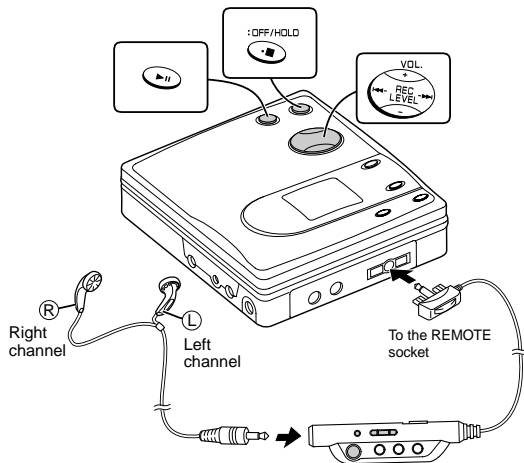
TOC EDIT! → GOOD BYE!

Warning:

If the power is removed (Battery/AC adaptor) whilst "TOC" is displayed, the MiniDisc unit lid will remain locked until the battery/main power is restored and the unit is turned on. Your new recordings or edited changes will be lost and your MiniDisc may become unusable.



Playback



- 1 Insert the earphones plug firmly into the earphones socket on the remote control unit.**
- 2 Plug the remote control into the REMOTE socket on the unit.**
- 3 Insert a MiniDisc.**
- 4 Press the ▶|| button.**
Playback starts automatically with a playback only MiniDisc or a MiniDisc which is protected against accidental erasure (Auto-play function).

To stop playback

Press the ■:OFF/HOLD button.

If the unit is not operated for at least 2 minutes whilst in the stop mode, the power will shut off automatically.